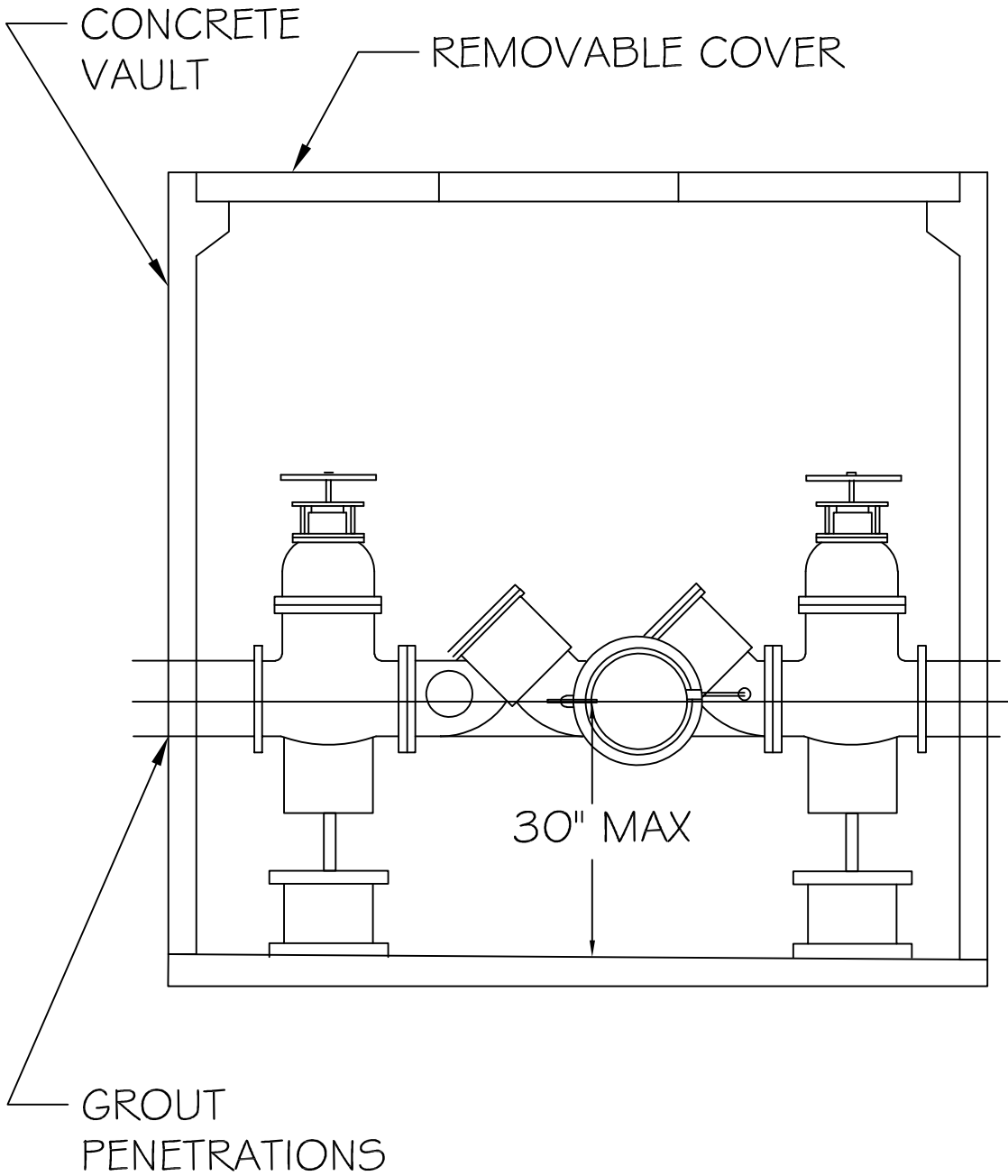


Appendix 11-1
Water Standard Details



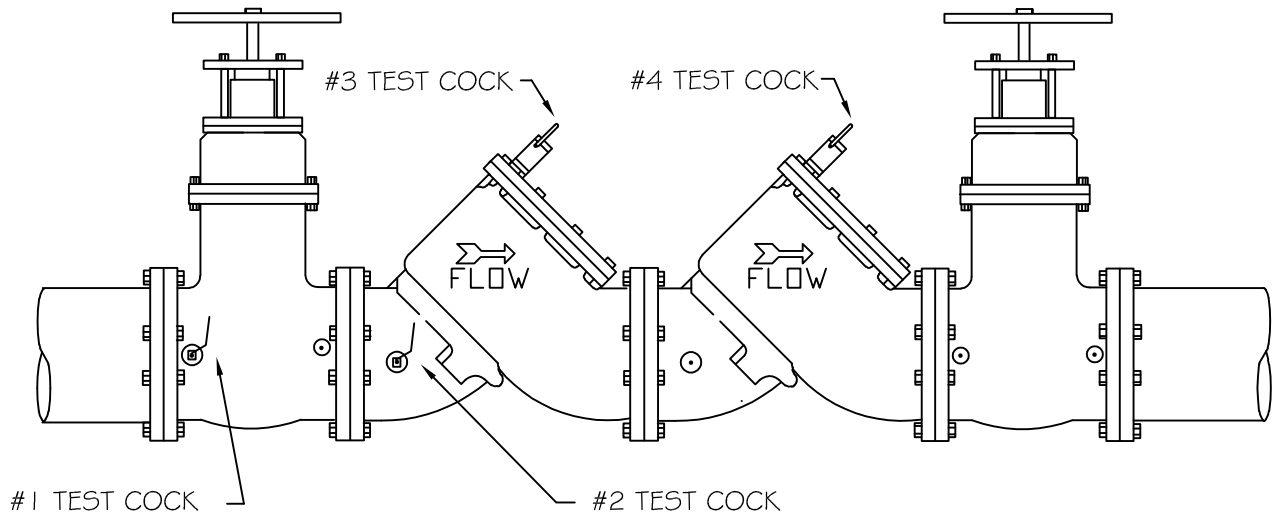
NOTES:

1. PERMANENT FIXED LADDER REQUIRED WHEN VAULTS ARE 4-FT AND OVER IN DEPTH.
2. PROVIDE SUPPORTS FOR 2 1/2-IN AND LARGER DEVICES.

PUBLIC UTILITY DISTRICT NO. 1
OF JEFFERSON COUNTY

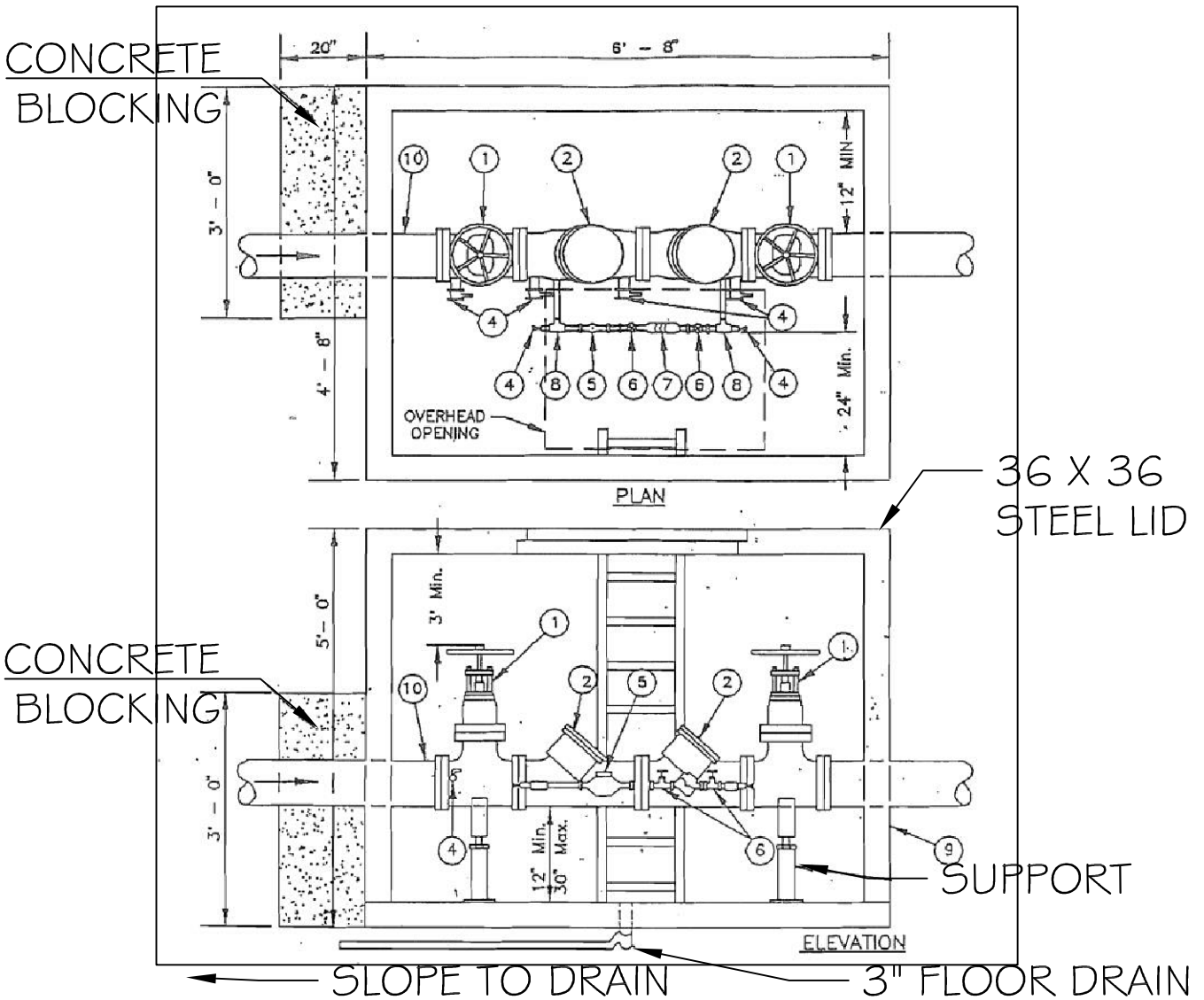
REDUCED PRESSURE PRINCIPLE
BACKFLOW DEVICES (RPBD)

DWG. NO.	REVISIONS	DATE	REVISIONS	DATE
W-12	SAH	8/6/20		



1. SHUT-OFF VALVES, CHECK VALVES, AND TEST COCKS SHALL BE STANDARD TO THE APPROVED BACKFLOW ASSEMBLY.
2. ALL LARGE (2-1/2" - 10") ASSEMBLIES TO BE SUPPORTED BY A CRADLE.
3. ENCLOSURE FOUNDATIONS SHALL BE CONSTRUCTED OF 4" OF CONCRETE OR 6" OF STONE.
4. ASSEMBLIES MUST BE ON CURRENT APPROVAL LIST.
5. 2 1/2" AND LARGER ASSEMBLIES SHALL BE FUSION BONDED EPOXY COATED INCLUDING SHUTOFF VALVES.

PUBLIC UTILITY DISTRICT NO. 1 OF JEFFERSON COUNTY				
STANDARD DOUBLE CHECK VALVE ASSEMBLY				
DWG. NO.	REVISIONS	DATE	REVISIONS	DATE
W-13	SAH	10/7/20		



MATERIAL LIST:

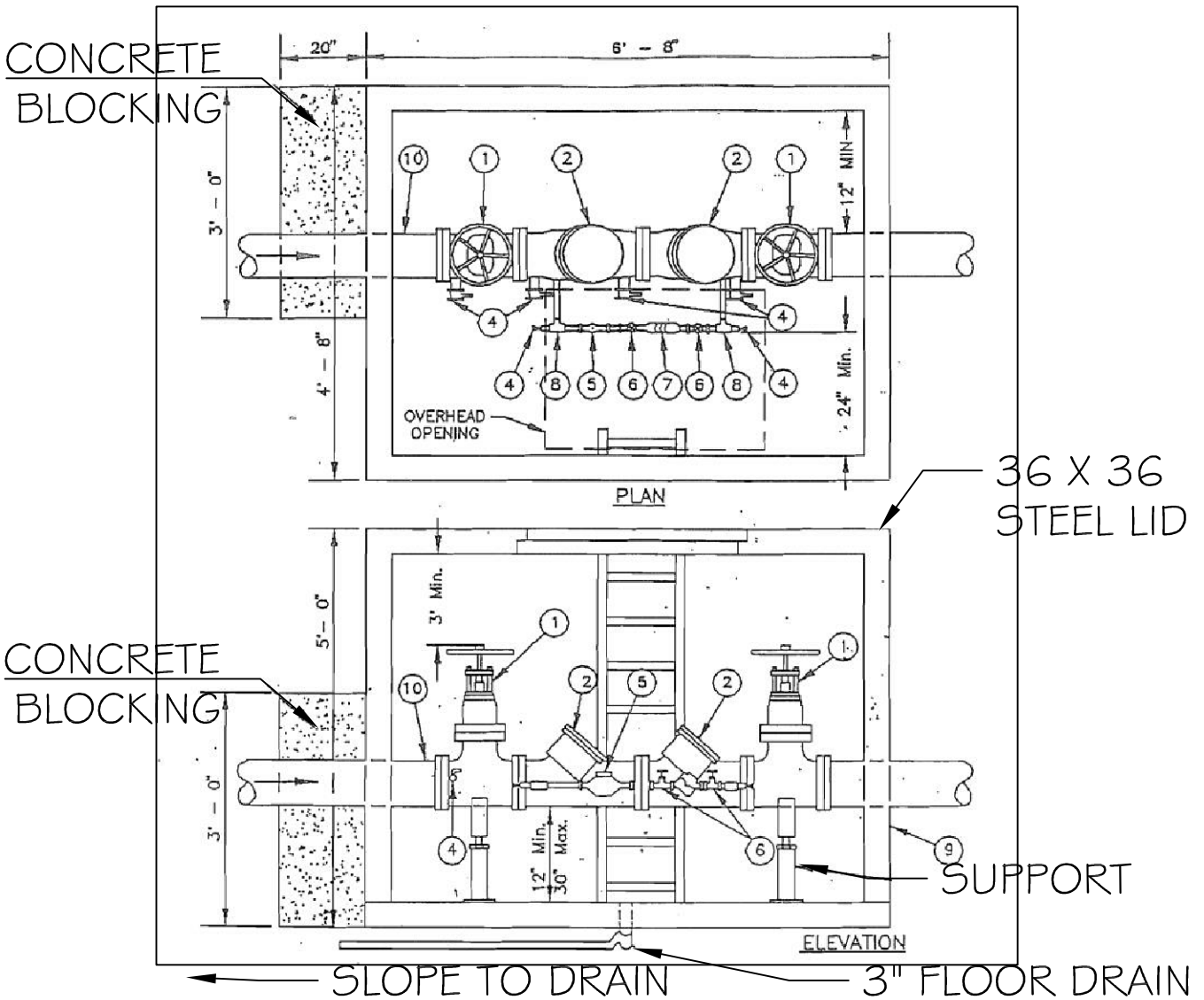
- | | |
|---|--|
| <ul style="list-style-type: none"> 1. MAIN GATE VALVE, RESILIENT SEATED FULL FLOW SHUT OFF VALVES/TEST COCKS. 2. DOUBLE DETECTOR CHECK CONFORMED TO AWWA STANDARDS C506-78 3. POST INDICATOR VALVE 4. 3/4" BALL VALVE (TEST COCK) 5. 5/8" X 3/4" DOMESTIC METER, 1 TO 20 GPM | <ul style="list-style-type: none"> 6. 3/4" GATE VALVE, ASTM B584-78 7. 3/4" DOUBLE CHECK VALVE BACKFLOW PREVENTOR 8. 3/4" TEE 9. VALVE CHAMBER, PIPE INTERNATIONAL PIPE & ENGINEERING, INC. WM 19 WITH 12" RISER OR EQUAL 10. WALL PIPE, FLANGED X MJ WITH INTEGRALLY CAST COLLAR |
|---|--|

NOTES:

- 1. ITEMS 1-10 ARE PACKAGED AS AN "APPROVED ASSEMBLY" NO SUBSTITUTIONS OR ALTERNATIVES ALLOWED AND ARE SUBJECT TO FIRE MARSHALL'S APPROVAL.
- 2. PROVIDE PLUGS ON TEST COCKS. FLOOR DRAIN CANNOT BE SLOPED TO DAYLIGHT OR A STORM SEWER. A SUMP PUMP MUST BE INSTALLED.

- 3. PERMANENT FIXED LADDER REQUIRED WHEN VAULTS ARE 4-FT AND OVER IN DEPTH.
- 4. PROVIDE SUPPORTS FOR 2 1/2-IN AND LARGER DEVICES.

PUBLIC UTILITY DISTRICT NO. 1 OF JEFFERSON COUNTY				
DOUBLE DETECTOR CHECK VALVE ASSEMBLY				
DWG. NO.	REVISIONS	DATE	REVISIONS	DATE
W-14	SAH	8/6/20		



MATERIAL LIST:

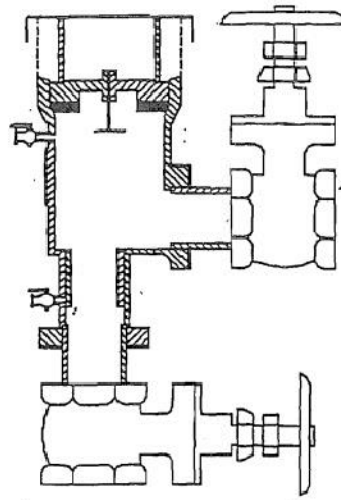
- | | |
|---|--|
| <ul style="list-style-type: none"> 1. MAIN GATE VALVE, RESILIENT SEATED FULL FLOW SHUT OFF VALVES/TEST COCKS. 2. DOUBLE DETECTOR CHECK CONFORMED TO AWWA STANDARDS C506-78 3. POST INDICATOR VALVE 4. 3/4" BALL VALVE (TEST COCK) 5. 5/8" X 3/4" DOMESTIC METER, 1 TO 20 GPM | <ul style="list-style-type: none"> 6. 3/4" GATE VALVE, ASTM B584-78 7. 3/4" DOUBLE CHECK VALVE BACKFLOW PREVENTOR 8. 3/4" TEE 9. VALVE CHAMBER, PIPE INTERNATIONAL PIPE & ENGINEERING, INC. WM 19 WITH 12" RISER OR EQUAL 10. WALL PIPE, FLANGED X MJ WITH INTEGRALLY CAST COLLAR |
|---|--|

NOTES:

- 1. ITEMS 1-10 ARE PACKAGED AS AN "APPROVED ASSEMBLY" NO SUBSTITUTIONS OR ALTERNATIVES ALLOWED AND ARE SUBJECT TO FIRE MARSHALL'S APPROVAL.
- 2. PROVIDE PLUGS ON TEST COCKS. FLOOR DRAIN CANNOT BE SLOPED TO DAYLIGHT OR A STORM SEWER. A SUMP PUMP MUST BE INSTALLED.

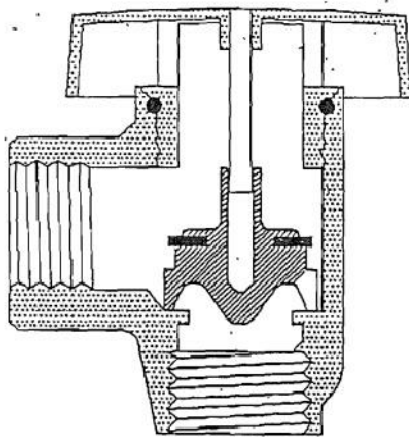
- 3. PERMANENT FIXED LADDER REQUIRED WHEN VAULTS ARE 4-FT AND OVER IN DEPTH.
- 4. PROVIDE SUPPORTS FOR 2 1/2-IN AND LARGER DEVICES.

PUBLIC UTILITY DISTRICT NO. 1 OF JEFFERSON COUNTY				
DOUBLE DETECTOR CHECK VALVE ASSEMBLY				
DWG. NO.	REVISIONS	DATE	REVISIONS	DATE
W-14	SAH	8/6/20		

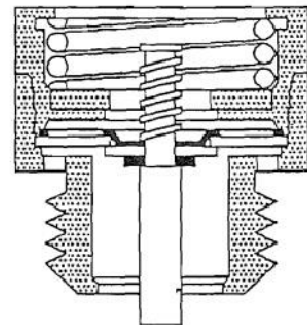


Must be installed a minimum of 12" above highest downstream point.

PRESSURE TYPE VACUUM BREAKER



ATMOSPHERIC VACUUM BREAKER CROSS SECTION



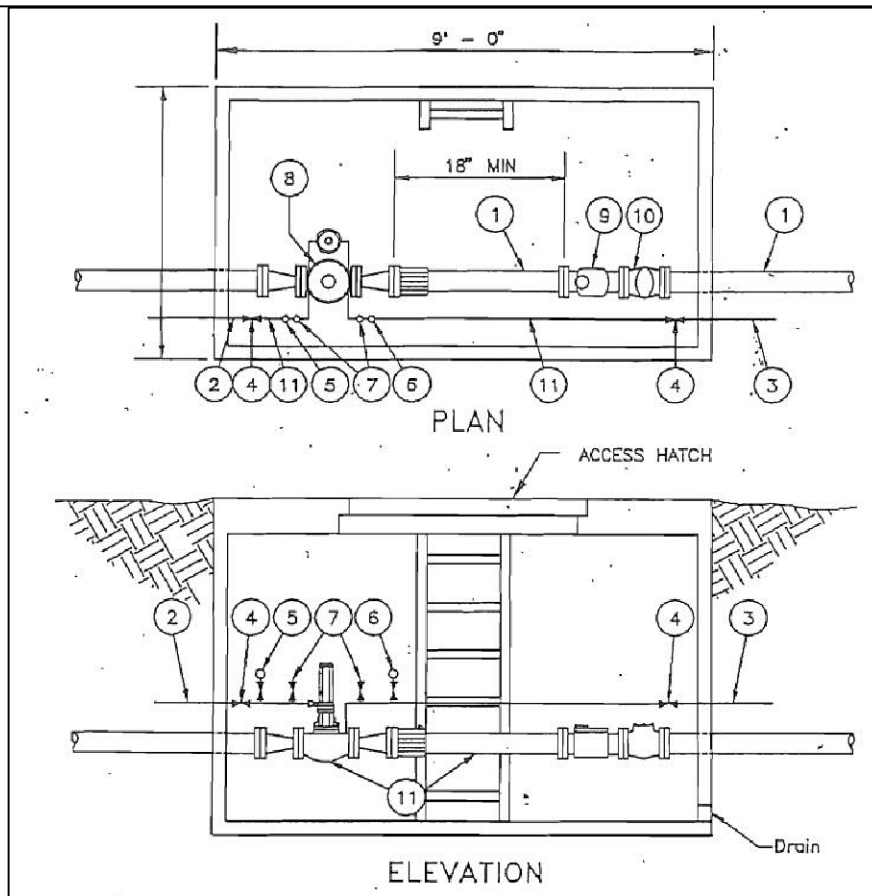
HOSE BIBB VACUUM BREAKER CROSS SECTION

Must be installed a minimum of 5" above highest downstream point. No valves downstream.

PUBLIC UTILITY DISTRICT NO. 1
OF JEFFERSON COUNTY

PRESSURE AND ATMOSPHERIC
VACUUM BREAKERS

DWG. NO.	REVISIONS	DATE	REVISIONS	DATE
W-15	SAH	8/6/20		



MATERIAL LIST:

- 1. MAIN GATE VALVE, RESILIENT SEATED FULL FLOW SHUT OFF VALVES/TEST COCKS.
- 2. $\frac{3}{4}$ " POLYETHYLENE RESERVOIR SENSING LINE, TAPPED INTO RESERVOIR SIDE OF INSTALLATION WITH SERVICE SADDLE AND CORPORATION STOP.
- 3. $\frac{3}{4}$ " POLYETHYLENE BACK PRESSURE SENSING LINE TAPPED INTO INLET SIDE OF MAIN WITH SERVICE SADDLE AND CORPORATION STOP.
- 4. $\frac{3}{4}$ " BALL VALVE, SHUT OFF
- 5. LIQUID FILLED PRESSURE GAGE, 0 TO 30 PSI, WITH $\frac{3}{4}$ " BALL VALVE AND $\frac{3}{4}$ " TEE.
- 6. LIQUID FILLED PRESSURE GAGE 0 TO 100 PSI, WITH $\frac{3}{4}$ " BALL VALVE AND $\frac{3}{4}$ " TEE.
- 7. $\frac{3}{4}$ " TEE WITH $\frac{3}{4}$ " BALL VALVE, TO BE INSTALLED NEAR ALTITUDE VALVE AT POINT IN LINES TO PROVIDE FOR AIR RELEASE. PROVIDE I.P.T TO HOSE THREAD ADAPTER ON DISCHARGE.
- 8. ALTITUDE VALVE FLANGED, CLA-VAL OR EQUAL. THIS INCLUDES A BACK PRESSURE SUSTAINING FEATURE AND OPENING AND CLOSING SPEED CONTROL.
- 9. TURBO METER, SENSUS OR EQUAL.
- 10. STRAINER (SEDIMENT TRAP TYPE), FLANGED.
- 11. SUPPORT AS REQUIRED.

PUBLIC UTILITY DISTRICT NO. 1 OF JEFFERSON COUNTY				
ALTITUDE VALVE ASSEMBLY VAULT				
DWG. NO.	REVISIONS	DATE	REVISIONS	DATE
W-16	SAH	8/6/20		